

## Anti-BOB.1 antibody (150-256) [ABT-BOB1] (STJA0038902)

### GENERAL INFORMATION

Product Type	Primary antibodies
Applications	IHC/WB/IF/ELISA
Host / Source	Mouse
Reactivity	Human/Mouse

### PRODUCT PROPERTIES

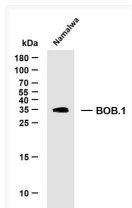
Clonality	Monoclonal
Conjugation	Unconjugated
Purification	Protein G
Dilution Range	IHC 1:200-1000 WB 1:500-2000 IF 1:100-500 ELISA 1:1000-5000
Formulation	PBS, 50% glycerol, 0.05% Proclin 300, 0.05%BSA
Isotype	IgG2ak
Molecular Weight	Calculated: 27kD Observed: 35kD
Storage Instruction	Store at -20°C for up to 1 year from the date of receipt, and avoid repeat freeze-thaw cycles.

### TARGET INFORMATION

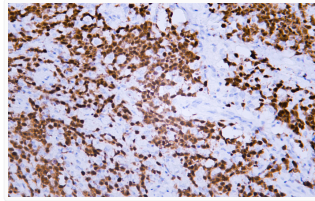
Immunogen Region	150-256
Specificity	The antibody can specifically recognize human BOB.1 protein.

### ADDITIONAL INFORMATION

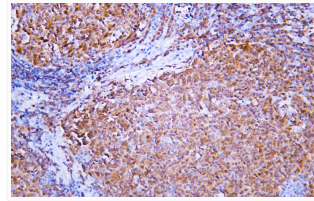
Note STRICTLY FOR FURTHER SCIENTIFIC RESEARCH USE ONLY (RUO). MUST NOT TO BE USED IN DIAGNOSTIC OR THERAPEUTIC APPLICATIONS.



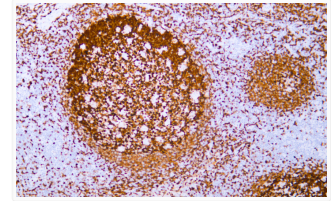
Western Blot (WB): Whole cell lysates were separated by 15% SDS-PAGE, and the membrane was blotted with anti-BOB.1 STJA0038902



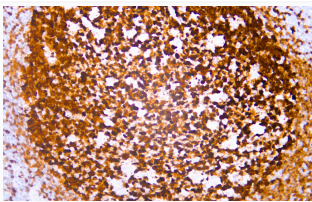
Immunohistochemistry - Paraffin (IHC-P): Human diffuse large B-cell lymphoma tissue was stained with anti-BOB.1 STJA0038902



Immunohistochemistry - Paraffin (IHC-P): Human follicular lymphoma tissue was stained with anti-BOB.1 (ABT-BOB1) STJA0038902



Immunohistochemistry (IHC): Human tonsil tissue was stained with anti-BOB.1 (ABT-BOB1) antibody. STJA0038902



Immunohistochemistry - Paraffin (IHC-P): Human tonsil tissue was stained with anti-BOB.1 (ABT-BOB1) antibody. STJA0038902