

## Anti-Actin, smooth muscle antibody (1-100) [ABT-SMA] (STJA0038898)

### GENERAL INFORMATION

Product Type	Primary antibodies
Applications	IHC/WB/IF/ELISA
Host / Source	Mouse
Reactivity	Human/Mouse/Rat

### PRODUCT PROPERTIES

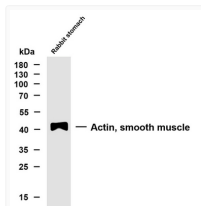
Clonality	Monoclonal
Conjugation	Unconjugated
Purification	Protein G
Dilution Range	IHC 1:200-1000 WB 1:500-2000 IF 1:100-500 ELISA 1:1000-5000
Formulation	PBS, 50% glycerol, 0.05% Proclin 300, 0.05%BSA
Isotype	IgG2ak
Molecular Weight	Observed: 42kD
Storage Instruction	Store at -20°C for up to 1 year from the date of receipt, and avoid repeat freeze-thaw cycles.

### TARGET INFORMATION

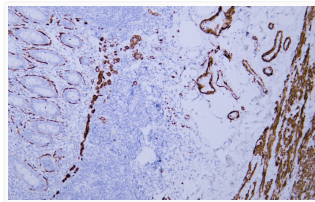
Immunogen Region	1-100
Specificity	The antibody can specifically recognize smooth muscle actin and shows no reaction with actin of skeletal muscle or cardiac muscle.

### ADDITIONAL INFORMATION

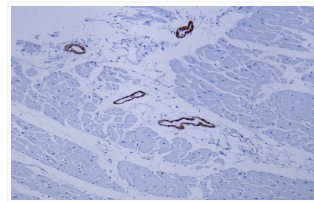
Note STRICTLY FOR FURTHER SCIENTIFIC RESEARCH USE ONLY (RUO). MUST NOT TO BE USED IN DIAGNOSTIC OR THERAPEUTIC APPLICATIONS.



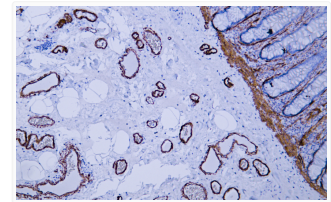
Western Blot (WB): Whole cell lysates were separated by 10% SDS-PAGE, and the membrane was blotted with anti-Actin, STJA0038898



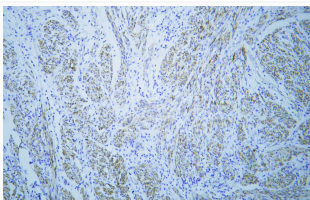
Immunohistochemistry - Paraffin (IHC-P): Human appendix tissue was stained with anti-SMA (ABT-SMA) antibody. STJA0038898



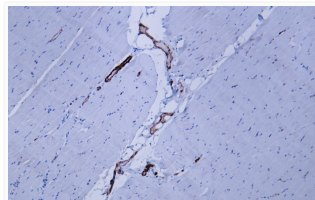
Immunohistochemistry - Paraffin (IHC-P): Human cardiac muscle tissue was stained with anti-SMA (ABT-SMA) antibody. STJA0038898



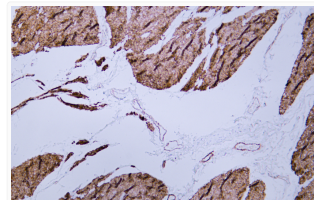
Immunohistochemistry - Paraffin (IHC-P): Human colon tissue was stained with anti-SMA (ABT-SMA) antibody. STJA0038898



Immunohistochemistry - Paraffin (IHC-P): Human leiomyoma tissue was stained with anti-SMA (ABT-SMA) antibody. STJA0038898



Immunohistochemistry - Paraffin (IHC-P): Human skeletal muscle tissue was stained with anti-SMA (ABT-SMA) antibody. STJA0038898



Immunohistochemistry - Paraffin (IHC-P): Human smooth muscle tissue was stained with anti-SMA (ABT-SMA) antibody. STJA0038898