

Anti-GSDMD antibody (AA range: 1-100) [PTR1398] (STJA0038893)

GENERAL INFORMATION

Product Type	Primary antibodies
Applications	WB/IF/ELISA
Host / Source	Mouse
Reactivity	Human/Mouse/Rat

PRODUCT PROPERTIES

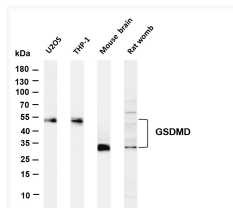
Clonality	Monoclonal
Conjugation	Unconjugated
Purification	The antibody was affinity-purified from ascites by affinity-chromatography using specific immunogen.
Dilution Range	WB 1:500-2000 IF 1:100-500 ELISA 1:1000-5000
Formulation	PBS, 50% glycerol, 0.05% Proclin 300, 0.05%BSA
Isotype	IgG1k
Molecular Weight	Calculated: 53kD, 31kD Observed: 53kD, 31kD
Storage Instruction	Store at -20°C for up to 1 year from the date of receipt, and avoid repeat freeze-thaw cycles.

TARGET INFORMATION

Gene ID	79792
Gene Symbol	GSDMD
UniProt ID	GSDMD_HUMAN
Immunogen Region	AA range: 1-100
Specificity	This antibody detects endogenous levels of GSDMD protein.

ADDITIONAL INFORMATION

Note STRICTLY FOR FURTHER SCIENTIFIC RESEARCH USE ONLY (RUO). MUST NOT TO BE USED IN DIAGNOSTIC OR THERAPEUTIC APPLICATIONS.



Western Blot (WB): Various whole cell lysates were separated by 4-20% SDS-PAGE, and the membrane was blotted with STJA0038893