

Anti-Lysozyme antibody (1-100) [ABT191] (STJA0038882)

GENERAL INFORMATION

Product Type	Primary antibodies
Applications	IHC/WB/IF/ELISA
Host / Source	Mouse
Reactivity	Human/Mouse/Rat

PRODUCT PROPERTIES

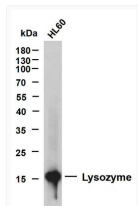
Clonality	Monoclonal
Conjugation	Unconjugated
Purification	Protein G
Dilution Range	IHC 1:200-1000 WB 1:500-2000 IF 1:100-500 ELISA 1:1000-5000
Formulation	PBS, 50% glycerol, 0.05% Proclin 300, 0.05%BSA
Isotype	IgG3k
Molecular Weight	Calculated: 17kD Observed: 17kD
Storage Instruction	Store at -20°C for up to 1 year from the date of receipt, and avoid repeat freeze-thaw cycles.

TARGET INFORMATION

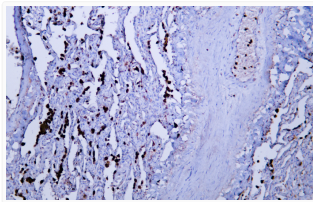
Immunogen Region	1-100
Specificity	The antibody can specifically recognize human Lysozyme protein.

ADDITIONAL INFORMATION

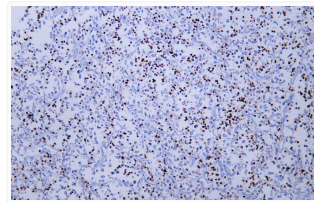
Note STRICTLY FOR FURTHER SCIENTIFIC RESEARCH USE ONLY (RUO). MUST NOT TO BE USED IN DIAGNOSTIC OR THERAPEUTIC APPLICATIONS.



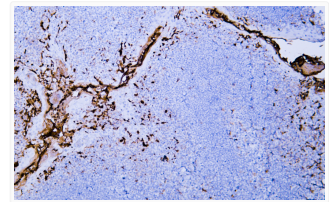
Western Blot (WB): HL60 whole cell lysates were separated by 12% SDS-PAGE, and the membrane was blotted with STJA0038882



Immunohistochemistry - Paraffin (IHC-P): Human lung tissue was stained with Anti-Lysozyme (ABT191) Antibody. STJA0038882



Immunohistochemistry - Paraffin (IHC-P): Human malignant fibrous histiocytoma tissue was stained with Anti-Lysozyme STJA0038882



Immunohistochemistry (IHC): Human tonsil tissue was stained with Anti-Lysozyme (ABT191) Antibody. STJA0038882