

Anti-Recombinant-chimeric-mCherry-Nb-Fc antibody (STJA0038231)

GENERAL INFORMATION

Product Type	Primary antibodies
Applications	ELISA/FC
Host / Source	293F Cells
Reactivity	Human

PRODUCT PROPERTIES

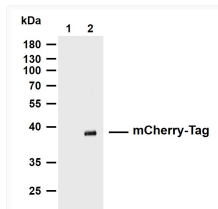
Clonality	Monoclonal
Concentration	Lot specific
Conjugation	Unconjugated
Purification	Recombinant Expression and Affinity purified
Dilution Range	ELISA 1:5000-100000 FC 1-2 Mu g/Test
Formulation	Phosphate-buffered solution
Storage Instruction	Store at-20°C for up to 1 year from the date of receipt, and avoid repeat freeze-thaw cycles.

TARGET INFORMATION

Specificity	This recombinant monoclonal antibody can detects endogenous levels of CD10 protein.
-------------	---

ADDITIONAL INFORMATION

Note STRICTLY FOR FURTHER SCIENTIFIC RESEARCH USE ONLY (RUO). MUST NOT TO BE USED IN DIAGNOSTIC OR THERAPEUTIC APPLICATIONS.



Western Blot (WB): Whole extracts were separated by 10% SDS-PAGE, and the membrane was blotted with anti-mCherry-Tag STJA0038231