

Anti-CKMT1 antibody [1A6-C7-G10] (STJA0038217)

GENERAL INFORMATION

Product Type	Primary antibodies
Applications	WB
Host / Source	Mouse
Reactivity	Human/Rat

PRODUCT PROPERTIES

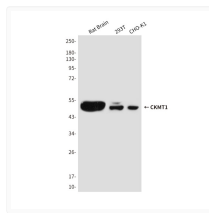
Clonality	Monoclonal
Concentration	5.16 mg/mL
Conjugation	Unconjugated
Purification	Affinity Purified
Dilution Range	WB 1:500-1:1000
Formulation	Liquid in PBS containing 50% glycerol, 0.5% BSA and 0.02% sodium azide, pH 7.3.
Isotype	IgG1
Storage Instruction	Store at 4°C short term. Aliquot and store at -20°C long term. Avoid freeze/thaw cycles.

TARGET INFORMATION

Gene ID	1159/548596
Gene Symbol	CKMT1A,CKMT1B
UniProt ID	KCRU_HUMAN

ADDITIONAL INFORMATION

Note STRICTLY FOR FURTHER SCIENTIFIC RESEARCH USE ONLY (RUO). MUST NOT TO BE USED IN DIAGNOSTIC OR THERAPEUTIC APPLICATIONS.



CKMT1 antibody western blot rat brain 293T
CHO-K1 STJA0038217