

Anti-beta Tubulin antibody [1E1-E8-H4] (STJA0038216)

GENERAL INFORMATION

Product Type	Primary antibodies
Applications	WB/ICC/IF
Host / Source	Mouse
Reactivity	Human/Mouse/Monkey/Rat

PRODUCT PROPERTIES

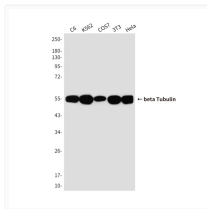
Clonality	Monoclonal
Concentration	4.1 mg/mL
Conjugation	Unconjugated
Purification	Affinity Purified
Dilution Range	WB 1:5000-1:10000 IF 1:100-1:200
Formulation	Liquid in PBS containing 50% glycerol, 0.5% BSA and 0.02% sodium azide, pH 7.3.
Isotype	IgG1
Storage Instruction	Store at 4°C short term. Aliquot and store at -20°C long term. Avoid freeze/thaw cycles.

TARGET INFORMATION

Gene ID	203068
Gene Symbol	TUBB
UniProt ID	TBB5_HUMAN

ADDITIONAL INFORMATION

Note STRICTLY FOR FURTHER SCIENTIFIC RESEARCH USE ONLY (RUO). MUST NOT TO BE USED IN DIAGNOSTIC OR THERAPEUTIC APPLICATIONS.



Tubulin beta antibody western blot C6 K562
 COS7 3T3 HeLa STJA0038216