

Anti-Pyruvate Dehydrogenase E1 alpha antibody [3H2-F8-B5] (STJA0038210)

GENERAL INFORMATION

Product Type	Primary antibodies
Applications	WB/ICC/IF
Host / Source	Mouse
Reactivity	Human/Mouse/Monkey/Rat

PRODUCT PROPERTIES

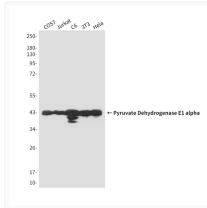
Clonality	Monoclonal
Concentration	3.4 mg/mL
Conjugation	Unconjugated
Purification	Affinity Purified
Dilution Range	WB 1:500-1:1000 IF 1:50-1:200
Formulation	Liquid in PBS containing 50% glycerol, 0.5% BSA and 0.02% sodium azide, pH 7.3.
Isotype	IgG1
Storage Instruction	Store at 4°C short term. Aliquot and store at -20°C long term. Avoid freeze/thaw cycles.

TARGET INFORMATION

Gene ID	5160
Gene Symbol	PDHA1
UniProt ID	ODPA_HUMAN

ADDITIONAL INFORMATION

Note STRICTLY FOR FURTHER SCIENTIFIC RESEARCH USE ONLY (RUO). MUST NOT TO BE USED IN DIAGNOSTIC OR THERAPEUTIC APPLICATIONS.



pyruvate dehydrogenase alpha 1 antibody
 western blot COS7 Jurkat C6 3T3 HeLa
 STJA0038210