

Anti-CSF1R antibody [DM106] (STJA0038156)

GENERAL INFORMATION

Product Type	Primary antibodies
Applications	FC/ELISA
Host / Source	Rabbit
Reactivity	Human

PRODUCT PROPERTIES

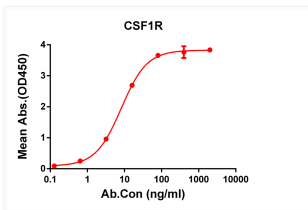
Clonality	Monoclonal
Conjugation	Unconjugated
Purification	Affinity Chromatography
Dilution Range	FC 1:50-1:100 ELISA 1:10000
Formulation	Liquid in PBS containing 50% glycerol, 0.5% BSA and 0.02% sodium azide, pH 7.3.
Isotype	IgG
Storage Instruction	Store at 4°C short term. Aliquot and store at -20°C long term. Avoid freeze/thaw cycles.

TARGET INFORMATION

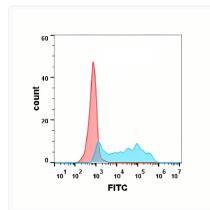
Gene ID	1436
Gene Symbol	CSF1R
UniProt ID	CSF1R_HUMAN

ADDITIONAL INFORMATION

Note STRICTLY FOR FURTHER SCIENTIFIC RESEARCH USE ONLY (RUO). MUST NOT TO BE USED IN DIAGNOSTIC OR THERAPEUTIC APPLICATIONS.



CSF1R antibody ELISA human protein
 STJA0038156



CSF1R antibody flow cytometry Expi293 cells
 STJA0038156