

Anti-B7H6 antibody [DM153] (STJA0038119)

GENERAL INFORMATION

Product Type	Primary antibodies
Applications	FC/ELISA
Host / Source	Rabbit
Reactivity	Human

PRODUCT PROPERTIES

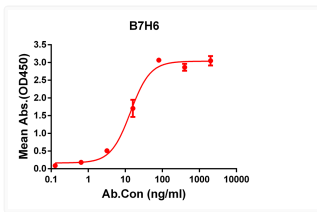
Clonality	Monoclonal
Conjugation	Unconjugated
Purification	Affinity Chromatography
Dilution Range	FC 1:50-1:100 ELISA 1:10000
Formulation	Liquid in PBS containing 50% glycerol, 0.5% BSA and 0.02% sodium azide, pH 7.3.
Isotype	IgG
Storage Instruction	Store at 4°C short term. Aliquot and store at -20°C long term. Avoid freeze/thaw cycles.

TARGET INFORMATION

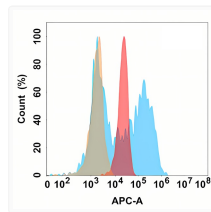
Gene ID	374383
Gene Symbol	NCR3LG1
UniProt ID	NR3L1_HUMAN

ADDITIONAL INFORMATION

Note STRICTLY FOR FURTHER SCIENTIFIC RESEARCH USE ONLY (RUO). MUST NOT TO BE USED IN DIAGNOSTIC OR THERAPEUTIC APPLICATIONS.



B7H6 antibody ELISA human protein His-tagged
STJA0038119



B7H6 antibody flow cytometry Expi293 cells
STJA0038119