

Anti-ACE2 antibody [DM47] (STJA0038109)

GENERAL INFORMATION

Product Type	Primary antibodies
Applications	FC/ELISA
Host / Source	Rabbit
Reactivity	Human

PRODUCT PROPERTIES

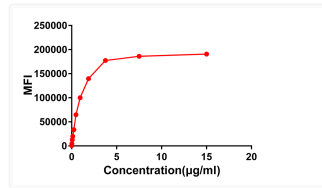
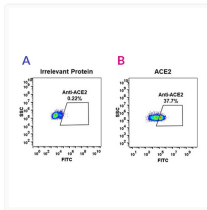
Clonality	Monoclonal
Conjugation	Unconjugated
Purification	Affinity Chromatography
Dilution Range	FC 1:50-1:100 ELISA 1:10000
Formulation	Liquid in PBS containing 50% glycerol, 0.5% BSA and 0.02% sodium azide, pH 7.3.
Isotype	IgG
Storage Instruction	Store at 4°C short term. Aliquot and store at -20°C long term. Avoid freeze/thaw cycles.

TARGET INFORMATION

Gene ID	59272
Gene Symbol	ACE2
UniProt ID	ACE2_HUMAN

ADDITIONAL INFORMATION

Note STRICTLY FOR FURTHER SCIENTIFIC RESEARCH USE ONLY (RUO). MUST NOT TO BE USED IN DIAGNOSTIC OR THERAPEUTIC APPLICATIONS.



ACE2 antibody flow cytometry Expi 293 cells human STJA0038109

ACE2 antibody flow cytometry Expi 293 cells STJA0038109