

## Anti-Prostate Specific Antigen antibody [BP6043] (STJA0037606)

### GENERAL INFORMATION

Product Type	Primary antibodies
Applications	IHC-P
Host / Source	Rabbit
Reactivity	Human

### PRODUCT PROPERTIES

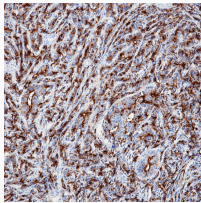
Clonality	Monoclonal
Conjugation	Unconjugated
Purification	Affinity Purified
Dilution Range	IHC 1:100-1:200
Formulation	Liquid in PBS containing 50% glycerol, 0.5% BSA and 0.02% sodium azide, pH 7.3.
Isotype	IgG
Storage Instruction	Store at 4°C short term. Aliquot and store at -20°C long term. Avoid freeze/thaw cycles.

### TARGET INFORMATION

Gene ID	<a href="#">354</a>
Gene Symbol	<a href="#">KLK3</a>
UniProt ID	<a href="#">KLK3_HUMAN</a>

### ADDITIONAL INFORMATION

Note STRICTLY FOR FURTHER SCIENTIFIC RESEARCH USE ONLY (RUO). MUST NOT TO BE USED IN DIAGNOSTIC OR THERAPEUTIC APPLICATIONS.



Prostate Specific Antigen antibody immunohistochemistry metastatic prostate cancer STJA0037606