

## Anti-CYP27A1 antibody (STJA0037523)

### GENERAL INFORMATION

Product Type	Primary antibodies
Applications	WB/IHC-F/IHC-P/ICC/IF/FC
Host / Source	Rabbit
Reactivity	Human/Mouse/Rat

### PRODUCT PROPERTIES

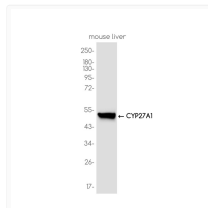
Clonality	Monoclonal
Conjugation	Unconjugated
Purification	Affinity Purified
Dilution Range	WB-1:1000-1:5000 IHC-P-1:100-1:200 ICC/IF-1:50-1:100 FC-1:50-1:100
Formulation	Liquid in 50mM Tris-Glycine (pH 7.4) , 0.15M NaCl, 40%Glycerol, 0.01% sodium azide and 0.05% BSA.
Isotype	IgG
Storage Instruction	Store at 4°C short term. Aliquot and store at -20°C long term. Avoid freeze/thaw cycles.

### TARGET INFORMATION

Gene ID	<a href="#">1593</a>
Gene Symbol	<a href="#">CYP27A1</a>
UniProt ID	<a href="#">CP27A_HUMAN</a>

### ADDITIONAL INFORMATION

Note STRICTLY FOR FURTHER SCIENTIFIC RESEARCH USE ONLY (RUO). MUST NOT TO BE USED IN DIAGNOSTIC OR THERAPEUTIC APPLICATIONS.



CYP27A1 antibody western blot mouse liver  
 STJA0037523