

Anti-EDG3 antibody [R06-712] (STJA0037258)

GENERAL INFORMATION

| | |
|---------------|--------------------|
| Product Type | Primary antibodies |
| Applications | WB |
| Host / Source | Rabbit |
| Reactivity | Human/Mouse/Rat |

PRODUCT PROPERTIES

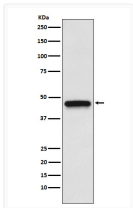
| | |
|---------------------|---|
| Clonality | Monoclonal |
| Conjugation | Unconjugated |
| Purification | Affinity Purified |
| Dilution Range | WB 1:500-1:1000 |
| Formulation | Rabbit IgG in phosphate buffered saline, pH 7.4, 150mM NaCl, 0.02% sodium azide and 50% glycerol. |
| Isotype | IgG |
| Storage Instruction | Store at 4°C short term. Aliquot and store at -20°C long term. Avoid freeze/thaw cycles. |

TARGET INFORMATION

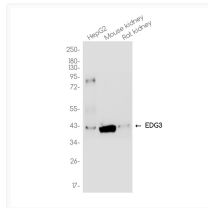
| | |
|-------------|-----------------------------|
| Gene ID | 1903 |
| Gene Symbol | S1PR3 |
| UniProt ID | S1PR3_HUMAN |

ADDITIONAL INFORMATION

Note **STRICTLY FOR FURTHER SCIENTIFIC RESEARCH USE ONLY (RUO). MUST NOT TO BE USED IN DIAGNOSTIC OR THERAPEUTIC APPLICATIONS.**



S1PR3 antibody western blot HepG2 lysates STJA0037258



EDG3 antibody western blot HepG2 mouse rat kidney STJA0037258