

## Anti-GSC antibody [R07-3Y1] (STJA0037120)

### GENERAL INFORMATION

Product Type	Primary antibodies
Applications	WB/IP
Host / Source	Rabbit
Reactivity	Human

### PRODUCT PROPERTIES

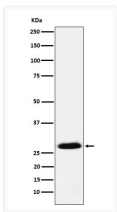
Clonality	Monoclonal
Conjugation	Unconjugated
Purification	Affinity Purified
Dilution Range	WB 1:500-1:1000 IP 1:50
Formulation	Rabbit IgG in phosphate buffered saline, pH 7.4, 150mM NaCl, 0.02% sodium azide and 50% glycerol.
Isotype	IgG
Storage Instruction	Store at 4°C short term. Aliquot and store at -20°C long term. Avoid freeze/thaw cycles.

### TARGET INFORMATION

Gene ID	<a href="#">145258</a>
Gene Symbol	<a href="#">GSC</a>
UniProt ID	<a href="#">GSC_HUMAN</a>

### ADDITIONAL INFORMATION

Note STRICTLY FOR FURTHER SCIENTIFIC RESEARCH USE ONLY (RUO). MUST NOT TO BE USED IN DIAGNOSTIC OR THERAPEUTIC APPLICATIONS.



GSC antibody western blot MCF-7 lysates  
STJA0037120