

Anti-CXCR5 antibody [R05-6V2] (STJA0037012)

GENERAL INFORMATION

| | |
|---------------|--------------------|
| Product Type | Primary antibodies |
| Applications | WB/ICC/IF/FC |
| Host / Source | Rabbit |
| Reactivity | Human/Mouse/Rat |

PRODUCT PROPERTIES

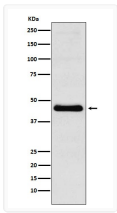
| | |
|---------------------|---|
| Clonality | Monoclonal |
| Conjugation | Unconjugated |
| Purification | Affinity Chromatography |
| Dilution Range | WB 1:500-1:1000 IF 1:50-1:200 FC 1:50-1:100 |
| Formulation | Rabbit IgG in phosphate buffered saline, pH 7.4, 150mM NaCl, 0.02% sodium azide and 50% glycerol. |
| Isotype | IgG |
| Storage Instruction | Store at 4°C short term. Aliquot and store at -20°C long term. Avoid freeze/thaw cycles. |

TARGET INFORMATION

| | |
|-------------|-----------------------------|
| Gene ID | 643 |
| Gene Symbol | CXCR5 |
| UniProt ID | CXCR5_HUMAN |

ADDITIONAL INFORMATION

Note STRICTLY FOR FURTHER SCIENTIFIC RESEARCH USE ONLY (RUO). MUST NOT TO BE USED IN DIAGNOSTIC OR THERAPEUTIC APPLICATIONS.



CXCR5 antibody western blot Molt4 cells
STJA0037012