

## Anti-LXR alpha antibody [R01-2H6] (STJA0036418)

### GENERAL INFORMATION

|               |                    |
|---------------|--------------------|
| Product Type  | Primary antibodies |
| Applications  | WB/ICC/IF/FC       |
| Host / Source | Rabbit             |
| Reactivity    | Human/Mouse/Rat    |

### PRODUCT PROPERTIES

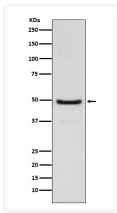
|                     |   |
|---------------------|---|
| Clonality           | Monoclonal  |
| Conjugation         | Unconjugated  |
| Purification        | Affinity Chromatography   |
| Dilution Range      | WB 1:500-1:1000<br>IF 1:50-1:200<br>FC 1:50-1:100   |
| Formulation         | Rabbit IgG in phosphate buffered saline, pH 7.4, 150mM NaCl, 0.02% sodium azide and 50% glycerol. |
| Isotype             | IgG   |
| Storage Instruction | Store at 4°C short term. Aliquot and store at -20°C long term. Avoid freeze/thaw cycles.          |

### TARGET INFORMATION

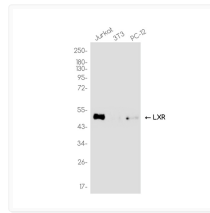
|             |                             |
|-------------|-----------------------------|
| Gene ID     | <a href="#">10062</a>       |
| Gene Symbol | <a href="#">NR1H3</a>       |
| UniProt ID  | <a href="#">NR1H3_HUMAN</a> |

### ADDITIONAL INFORMATION

Note STRICTLY FOR FURTHER SCIENTIFIC RESEARCH USE ONLY (RUO). MUST NOT TO BE USED IN DIAGNOSTIC OR THERAPEUTIC APPLICATIONS.



LXR alpha antibody western blot Jurkat  
STJA0036418



LXR alpha antibody western blot Jurkat 3T3 PC-12  
STJA0036418