

## Anti-Cathepsin L/V/K/H antibody [R06-6H6] (STJA0036335)

### GENERAL INFORMATION

Product Type	Primary antibodies
Applications	WB/IHC-P/ICC/IF/FC
Host / Source	Rabbit
Reactivity	Human/Mouse/Rat

### PRODUCT PROPERTIES

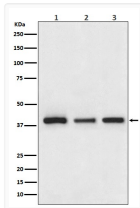
Clonality	Monoclonal
Conjugation	Unconjugated
Purification	Affinity Chromatography
Dilution Range	WB 1:500-1:1000 IHC 1:50-1:100 IF 1:50-1:200 FC 1:50-1:100
Formulation	Rabbit IgG in phosphate buffered saline, pH 7.4, 150mM NaCl, 0.02% sodium azide and 50% glycerol.
Isotype	IgG
Storage Instruction	Store at 4°C short term. Aliquot and store at -20°C long term. Avoid freeze/thaw cycles.

### TARGET INFORMATION

Gene ID	<a href="#">1514</a> <a href="#">1512</a> <a href="#">1513</a> <a href="#">CTSL</a> <a href="#">CTSH</a> <a href="#">CATL1_HUMAN</a> <a href="#">CATH_HUMAN</a> <a href="#">CATK_HUMAN</a>
---------	---

### ADDITIONAL INFORMATION

Note STRICTLY FOR FURTHER SCIENTIFIC RESEARCH USE ONLY (RUO). MUST NOT TO BE USED IN DIAGNOSTIC OR THERAPEUTIC APPLICATIONS.



Cathepsin L/V/K/H antibody western blot HepG2  
NIH/3T3 PC-12 STJA0036335