

## Anti-KLF4 antibody [R03-5H7] (STJA0036273)

### GENERAL INFORMATION

Product Type	Primary antibodies
Applications	WB/IHC-P/ICC/IF
Host / Source	Rabbit
Reactivity	Human/Mouse/Rat

### PRODUCT PROPERTIES

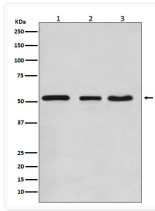
Clonality	Monoclonal
Conjugation	Unconjugated
Purification	Affinity Chromatography
Dilution Range	WB 1:500-1:1000 IHC 1:50-1:100 IF 1:50-1:200
Formulation	Rabbit IgG in phosphate buffered saline, pH 7.4, 150mM NaCl, 0.02% sodium azide and 50% glycerol.
Isotype	IgG
Storage Instruction	Store at 4°C short term. Aliquot and store at -20°C long term. Avoid freeze/thaw cycles.

### TARGET INFORMATION

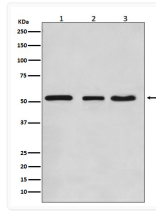
Gene ID	<a href="#">9314</a>
Gene Symbol	<a href="#">KLF4</a>
UniProt ID	<a href="#">KLF4_HUMAN</a>

### ADDITIONAL INFORMATION

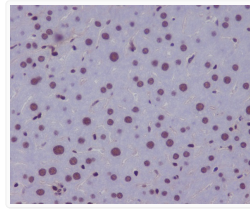
Note STRICTLY FOR FURTHER SCIENTIFIC RESEARCH USE ONLY (RUO). MUST NOT TO BE USED IN DIAGNOSTIC OR THERAPEUTIC APPLICATIONS.



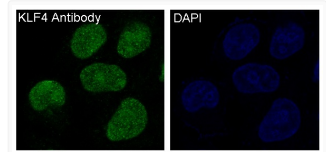
KLF4 antibody western blot HeLa NIH/3T3 C6 STJA0036273



KLF4 antibody western blot HeLa NIH/3T3 C6 STJA0036273



KLF4 antibody immunohistochemistry mouse liver STJA0036273



KLF4 antibody immunofluorescence HeLa cells STJA0036273