

## Anti-Caspase 10 antibody [R03-3B2] (STJA0036080)

### GENERAL INFORMATION

Product Type	Primary antibodies
Applications	WB/IHC-P/ICC/IF/IP/FC
Host / Source	Rabbit
Reactivity	Human/Mouse

### PRODUCT PROPERTIES

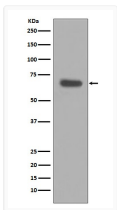
Clonality	Monoclonal
Conjugation	Unconjugated
Purification	Affinity Chromatography
Dilution Range	WB 1:500-1:1000 IHC 1:50-1:100 IF 1:50-1:200 IP 1:10 FC 1:50-1:100
Formulation	Rabbit IgG in phosphate buffered saline, pH 7.4, 150mM NaCl, 0.02% sodium azide and 50% glycerol.
Isotype	IgG
Storage Instruction	Store at 4°C short term. Aliquot and store at -20°C long term. Avoid freeze/thaw cycles.

### TARGET INFORMATION

Gene ID	<a href="#">843</a>
Gene Symbol	<a href="#">CASP10</a>
UniProt ID	<a href="#">CASPA_HUMAN</a>

### ADDITIONAL INFORMATION

Note STRICTLY FOR FURTHER SCIENTIFIC RESEARCH USE ONLY (RUO). MUST NOT TO BE USED IN DIAGNOSTIC OR THERAPEUTIC APPLICATIONS.



Caspase 10 antibody western blot HeLa lysates  
STJA0036080



pro Caspase 3 Antibody immunofluorescence  
MCF-7 STJA0036080