

Anti-Hemoglobin Subunit alpha antibody [R06-5F7] (STJA0035990)

GENERAL INFORMATION

Product Type	Primary antibodies
Applications	WB/IHC-P/IP/FC
Host / Source	Rabbit
Reactivity	Human/Mouse/Rat

PRODUCT PROPERTIES

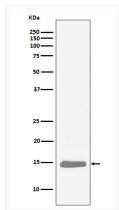
Clonality	Monoclonal
Conjugation	Unconjugated
Purification	Affinity Chromatography
Dilution Range	WB 1:500-1:1000 IHC 1:50-1:100 IP 1:50 FC 1:50-1:100
Formulation	Rabbit IgG in phosphate buffered saline, pH 7.4, 150mM NaCl, 0.02% sodium azide and 50% glycerol.
Isotype	IgG
Storage Instruction	Store at 4°C short term. Aliquot and store at -20°C long term. Avoid freeze/thaw cycles.

TARGET INFORMATION

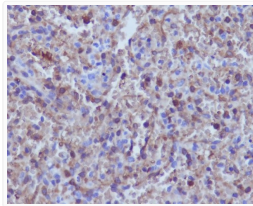
Gene ID	3039/3040
Gene Symbol	HBA1.HBA2
UniProt ID	HBA_HUMAN

ADDITIONAL INFORMATION

Note STRICTLY FOR FURTHER SCIENTIFIC RESEARCH USE ONLY (RUO). MUST NOT TO BE USED IN DIAGNOSTIC OR THERAPEUTIC APPLICATIONS.



Hemoglobin subunit alpha antibody western blot K562 STJA0035990



hemoglobin subunit alpha antibody immunohistochemistry human spleen STJA0035990