

## Anti-GOLPH2 antibody [R09-9E1] (STJA0035973)

### GENERAL INFORMATION

|               |                    |
|---------------|--------------------|
| Product Type  | Primary antibodies |
| Applications  | WB/IHC-P/ICC/IF/FC |
| Host / Source | Rabbit             |
| Reactivity    | Human/Mouse/Rat    |

### PRODUCT PROPERTIES

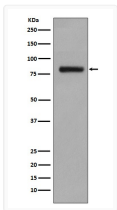
|                     |   |
|---------------------|---|
| Clonality           | Monoclonal  |
| Conjugation         | Unconjugated  |
| Purification        | Affinity Chromatography   |
| Dilution Range      | WB 1:500-1:1000<br>IHC 1:50-1:100<br>IF 1:50-1:200<br>FC 1:50-1:100                               |
| Formulation         | Rabbit IgG in phosphate buffered saline, pH 7.4, 150mM NaCl, 0.02% sodium azide and 50% glycerol. |
| Isotype             | IgG   |
| Storage Instruction | Store at 4°C short term. Aliquot and store at -20°C long term. Avoid freeze/thaw cycles.          |

### TARGET INFORMATION

|             |                             |
|-------------|-----------------------------|
| Gene ID     | <a href="#">51280</a>       |
| Gene Symbol | <a href="#">GOLM1</a>       |
| UniProt ID  | <a href="#">GOLM1_HUMAN</a> |

### ADDITIONAL INFORMATION

Note STRICTLY FOR FURTHER SCIENTIFIC RESEARCH USE ONLY (RUO). MUST NOT TO BE USED IN DIAGNOSTIC OR THERAPEUTIC APPLICATIONS.



GOLPH2 antibody western blot LnCaP lysates  
 STJA0035973