

Anti-Renilla Luciferase antibody [R08-7H1] (STJA0035914)

GENERAL INFORMATION

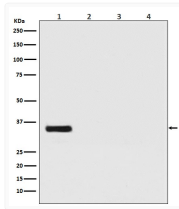
| | |
|---------------|--------------------|
| Product Type | Primary antibodies |
| Applications | WB/ICC/IF |
| Host / Source | Rabbit |
| Reactivity | Renilla Luciferase |

PRODUCT PROPERTIES

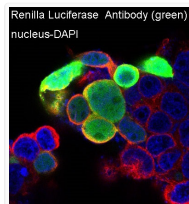
| | |
|---------------------|---|
| Clonality | Monoclonal |
| Conjugation | Unconjugated |
| Purification | Affinity Chromatography |
| Dilution Range | WB 1:500-1:1000 IF 1:50-1:200 |
| Formulation | Rabbit IgG in phosphate buffered saline, pH 7.4, 150mM NaCl, 0.02% sodium azide and 50% glycerol. |
| Isotype | IgG |
| Storage Instruction | Store at 4°C short term. Aliquot and store at -20°C long term. Avoid freeze/thaw cycles. |

ADDITIONAL INFORMATION

Note STRICTLY FOR FURTHER SCIENTIFIC RESEARCH USE ONLY (RUO). MUST NOT TO BE USED IN DIAGNOSTIC OR THERAPEUTIC APPLICATIONS.



Renilla Luciferase antibody western blot 293 HeLa NIH/3T3 C6 STJA0035914



Renilla Luciferase antibody immunofluorescence 293 cells STJA0035914