

## Anti-CEBPB antibody [R01-9K4] (STJA0035859)

### GENERAL INFORMATION

Product Type	Primary antibodies
Applications	WB/ICC/IF/IP/FC
Host / Source	Rabbit
Reactivity	Human/Mouse/Rat

### PRODUCT PROPERTIES

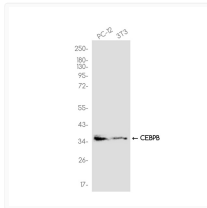
Clonality	Monoclonal
Conjugation	Unconjugated
Purification	Affinity Chromatography
Dilution Range	WB 1:500-1:1000 IF 1:50-1:200 IP 1:50 FC 1:50-1:100
Formulation	Rabbit IgG in phosphate buffered saline, pH 7.4, 150mM NaCl, 0.02% sodium azide and 50% glycerol.
Isotype	IgG
Storage Instruction	Store at 4°C short term. Aliquot and store at -20°C long term. Avoid freeze/thaw cycles.

### TARGET INFORMATION

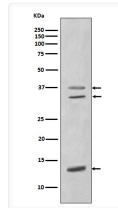
Gene ID	<a href="#">1051</a>
Gene Symbol	<a href="#">CEBPB</a>
UniProt ID	<a href="#">CEBPB_HUMAN</a>

### ADDITIONAL INFORMATION

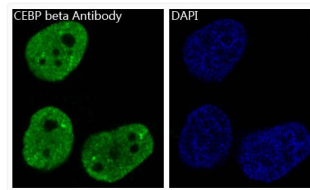
Note STRICTLY FOR FURTHER SCIENTIFIC RESEARCH USE ONLY (RUO). MUST NOT TO BE USED IN DIAGNOSTIC OR THERAPEUTIC APPLICATIONS.



CEBPB antibody western blot PC-12 NIH/3T3  
STJA0035859



CEBPB antibody western blot MCF-7 lysates  
STJA0035859



CEBPB antibody immunofluorescence HeLa cells  
STJA0035859