

Anti-CD20 antibody [R04-6H2] (STJA0035807)

GENERAL INFORMATION

Product Type	Primary antibodies
Applications	WB/IHC-P/FC
Host / Source	Rabbit
Reactivity	Human

PRODUCT PROPERTIES

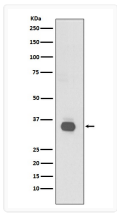
Clonality	Monoclonal
Conjugation	Unconjugated
Purification	Affinity Chromatography
Dilution Range	WB 1:500-1:1000 IHC 1:50-1:100 FC 1:50-1:100
Formulation	Rabbit IgG in phosphate buffered saline, pH 7.4, 150mM NaCl, 0.02% sodium azide and 50% glycerol.
Isotype	IgG
Storage Instruction	Store at 4°C short term. Aliquot and store at -20°C long term. Avoid freeze/thaw cycles.

TARGET INFORMATION

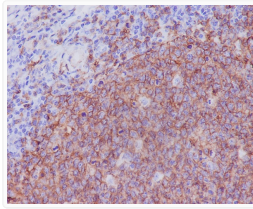
Gene ID	931
Gene Symbol	MS4A1
UniProt ID	CD20_HUMAN

ADDITIONAL INFORMATION

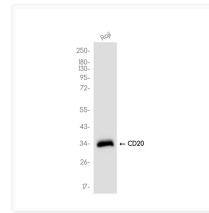
Note STRICTLY FOR FURTHER SCIENTIFIC RESEARCH USE ONLY (RUO). MUST NOT TO BE USED IN DIAGNOSTIC OR THERAPEUTIC APPLICATIONS.



CD20 antibody western blot Raji cells
STJA0035807



CD20 antibody immunohistochemistry human tonsil
STJA0035807



CD20 antibody western blot Raji lysates
STJA0035807