

Anti-ErbB 4 antibody [R03-6B4] (STJA0035743)

GENERAL INFORMATION

Product Type	Primary antibodies
Applications	WB/ICC/IF/FC/IP
Host / Source	Rabbit
Reactivity	Human/Mouse/Rat

PRODUCT PROPERTIES

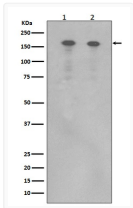
Clonality	Monoclonal
Conjugation	Unconjugated
Purification	Affinity Chromatography
Dilution Range	WB 1:500-1:1000 IF 1:50-1:200 IP 1:30 FC 1:40
Formulation	Rabbit IgG in phosphate buffered saline, pH 7.4, 150mM NaCl, 0.02% sodium azide and 50% glycerol.
Isotype	IgG
Storage Instruction	Store at 4°C short term. Aliquot and store at -20°C long term. Avoid freeze/thaw cycles.

TARGET INFORMATION

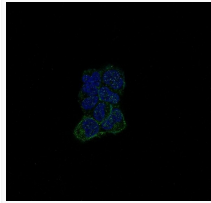
Gene ID	2066
Gene Symbol	ERBB4
UniProt ID	ERBB4_HUMAN

ADDITIONAL INFORMATION

Note STRICTLY FOR FURTHER SCIENTIFIC RESEARCH USE ONLY (RUO). MUST NOT TO BE USED IN DIAGNOSTIC OR THERAPEUTIC APPLICATIONS.



ErbB HER4 antibody western blot human brain MCF-7 STJA0035743



ErbB4 antibody immunofluorescence A673 cells STJA0035743