

Anti-PUMA antibody [R01-3K2] (STJA0035718)

GENERAL INFORMATION

Product Type	Primary antibodies
Applications	WB/IHC-P/ICC/IF/FC
Host / Source	Rabbit
Reactivity	Human/Mouse/Rat

PRODUCT PROPERTIES

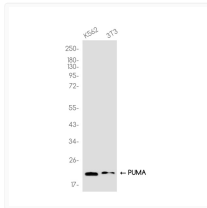
Clonality	Monoclonal
Conjugation	Unconjugated
Purification	Affinity Chromatography
Dilution Range	WB 1:500-1:1000 IHC 1:50-1:100 IF 1:50-1:200 FC 1:50-1:100
Formulation	Rabbit IgG in phosphate buffered saline, pH 7.4, 150mM NaCl, 0.02% sodium azide and 50% glycerol.
Isotype	IgG
Storage Instruction	Store at 4°C short term. Aliquot and store at -20°C long term. Avoid freeze/thaw cycles.

TARGET INFORMATION

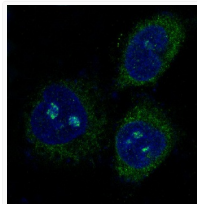
Gene ID	27113
Gene Symbol	BBC3
UniProt ID	BBC3_HUMAN

ADDITIONAL INFORMATION

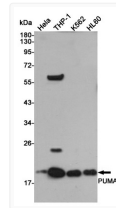
Note STRICTLY FOR FURTHER SCIENTIFIC RESEARCH USE ONLY (RUO). MUST NOT TO BE USED IN DIAGNOSTIC OR THERAPEUTIC APPLICATIONS.



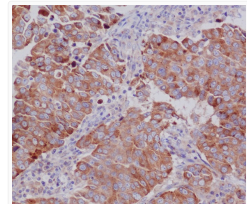
PUMA antibody western blot K562 3T3
STJA0035718



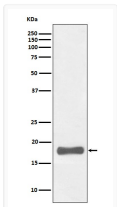
PUMA antibody immunofluorescence HeLa cells
STJA0035718



PUMA antibody western blot HeLa THP-1 K562 HL-60
STJA0035718



PUMA antibody immunohistochemistry human breast cancer
STJA0035718



PUMA antibody western blot K562 lysates
STJA0035718