

Anti-Bcl-XL antibody [R02-1C6] (STJA0035706)

GENERAL INFORMATION

Product Type	Primary antibodies
Applications	WB/IHC-P/ICC/IF/IP/FC
Host / Source	Rabbit
Reactivity	Human/Mouse/Rat

PRODUCT PROPERTIES

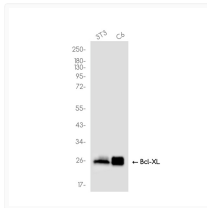
Clonality	Monoclonal
Conjugation	Unconjugated
Purification	Affinity Chromatography
Dilution Range	WB 1:500-1:1000 IHC 1:50-1:100 IF 1:50-1:200 IP 1:50 FC 1:50-1:100
Formulation	Rabbit IgG in phosphate buffered saline, pH 7.4, 150mM NaCl, 0.02% sodium azide and 50% glycerol.
Isotype	IgG
Storage Instruction	Store at 4°C short term. Aliquot and store at -20°C long term. Avoid freeze/thaw cycles.

TARGET INFORMATION

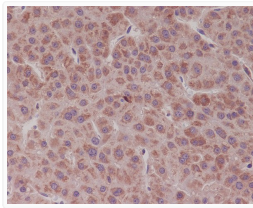
Gene ID	598
Gene Symbol	BCL2L1
UniProt ID	B2CL1_HUMAN

ADDITIONAL INFORMATION

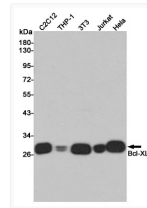
Note STRICTLY FOR FURTHER SCIENTIFIC RESEARCH USE ONLY (RUO). MUST NOT TO BE USED IN DIAGNOSTIC OR THERAPEUTIC APPLICATIONS.



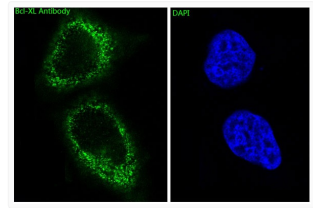
Bcl-XL antibody western blot 3T3 C6 cells
STJA0035706



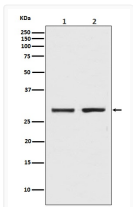
Bcl-XL antibody immunohistochemistry human liver cancer
STJA0035706



Bcl-XL antibody western blot C2C12 THP-1 3T3 Jurkat HeLa
STJA0035706



Bcl-XL antibody immunofluorescence HeLa cells
STJA0035706



Bcl-XL antibody western blot K562 C6
STJA0035706