

## Anti-PPP6C antibody [R47-9A-4] (STJA0035559)

### GENERAL INFORMATION

|               |                    |
|---------------|--------------------|
| Product Type  | Primary antibodies |
| Applications  | WB/ICC/IF/FC       |
| Host / Source | Rabbit             |
| Reactivity    | Human              |

### PRODUCT PROPERTIES

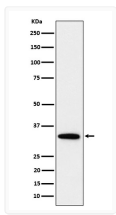
|                     |  |
|---------------------|--|
| Clonality           | Monoclonal   |
| Conjugation         | Unconjugated   |
| Purification        | Affinity Chromatography  |
| Dilution Range      | WB 1:500-1:1000<br>IF 1:50-1:200<br>FC 1:50  |
| Formulation         | Liquid in PBS, pH 7.4, 150mM NaCl, 0.02% sodium azide and 50% glycerol.                  |
| Isotype             | IgG  |
| Storage Instruction | Store at 4°C short term. Aliquot and store at -20°C long term. Avoid freeze/thaw cycles. |

### TARGET INFORMATION

|             |                            |
|-------------|----------------------------|
| Gene ID     | <a href="#">5537</a>       |
| Gene Symbol | <a href="#">PPP6C</a>      |
| UniProt ID  | <a href="#">PPP6_HUMAN</a> |

### ADDITIONAL INFORMATION

Note STRICTLY FOR FURTHER SCIENTIFIC RESEARCH USE ONLY (RUO). MUST NOT TO BE USED IN DIAGNOSTIC OR THERAPEUTIC APPLICATIONS.



PPP6C antibody western blot HeLa lysates  
 STJA0035559