

## Anti-Kappa light chain antibody [R22-11-9] (STJA0035512)

### GENERAL INFORMATION

Product Type	Primary antibodies
Applications	WB/IHC-P/IHC/IF
Host / Source	Rabbit
Reactivity	Human

### PRODUCT PROPERTIES

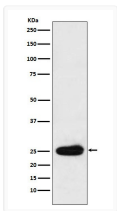
Clonality	Monoclonal
Conjugation	Unconjugated
Purification	Affinity Chromatography
Dilution Range	WB 1:500-1:1000 IHC 1:100-1:200 IF 1:50-1:200
Formulation	Liquid in PBS, pH 7.4, 150mM NaCl, 0.02% sodium azide and 50% glycerol.
Isotype	IgG
Storage Instruction	Store at 4°C short term. Aliquot and store at -20°C long term. Avoid freeze/thaw cycles.

### TARGET INFORMATION

Gene Symbol	<a href="#">IGKV1D-16</a> <a href="#">IGKC</a>
UniProt ID	<a href="#">KVD16_HUMAN</a> <a href="#">IGKC_HUMAN</a>

### ADDITIONAL INFORMATION

Note STRICTLY FOR FURTHER SCIENTIFIC RESEARCH USE ONLY (RUO). MUST NOT TO BE USED IN DIAGNOSTIC OR THERAPEUTIC APPLICATIONS.



Kappa light chain antibody western blot human plasma STJA0035512