

## Anti-Human kappa Light Chain antibody [R02-7H3] (STJA0035420)

### GENERAL INFORMATION

Product Type	Primary antibodies
Applications	WB/IHC-F/IHC-P/ICC/IF
Host / Source	Rabbit
Reactivity	Human

### PRODUCT PROPERTIES

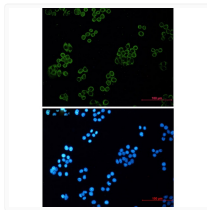
Clonality	Monoclonal
Concentration	0.3 mg/mL
Conjugation	Unconjugated
Purification	Affinity Purified
Dilution Range	WB 1:500-1:1000 IHC 1:50-1:100 IF 1:50-1:200
Formulation	50mM Tris-Glycine (pH 7.4) , 0.15M NaCl, 40% Glycerol, 0.01% Sodium azide and 0.05% BSA
Isotype	IgG
Storage Instruction	Store at 4°C short term. Aliquot and store at -20°C long term. Avoid freeze/thaw cycles.

### TARGET INFORMATION

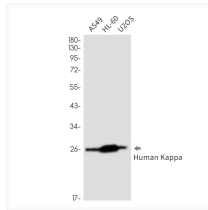
Gene Symbol	<a href="#">IGKC</a> Uniprot ID= <a href="#">IGKC_HUMAN</a> *
-------------	---

### ADDITIONAL INFORMATION

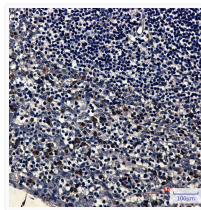
Note STRICTLY FOR FURTHER SCIENTIFIC RESEARCH USE ONLY (RUO). MUST NOT TO BE USED IN DIAGNOSTIC OR THERAPEUTIC APPLICATIONS.



human kappa light chain antibody immunocytochemistry HeLa STJA0035420



Human Kappa Light Chain antibody western blot A549 HL-60 U2OS STJA0035420



Human Kappa Light Chain antibody immunohistochemistry human tonsil tissue STJA0035420