

Anti-p23 antibody [R03-2A6] (STJA0035307)

GENERAL INFORMATION

| | |
|---------------|--------------------|
| Product Type | Primary antibodies |
| Applications | WB/ICC/IF/IP |
| Host / Source | Rabbit |
| Reactivity | Human/Mouse/Rat |

PRODUCT PROPERTIES

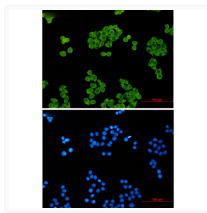
| | |
|---------------------|--|
| Clonality | Monoclonal |
| Concentration | 0.3 mg/mL |
| Conjugation | Unconjugated |
| Purification | Affinity Purified |
| Dilution Range | WB 1:500-1:1000 IF 1:50-1:200 IP 1:20 |
| Formulation | 50mM Tris-Glycine (pH 7.4) , 0.15M NaCl, 40% Glycerol, 0.01% Sodium azide and 0.05% BSA |
| Isotype | IgG |
| Storage Instruction | Store at 4°C short term. Aliquot and store at -20°C long term. Avoid freeze/thaw cycles. |

TARGET INFORMATION

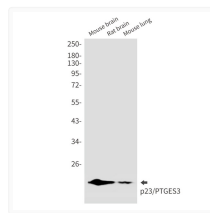
| | |
|-------------|----------------------------|
| Gene ID | 10728 |
| Gene Symbol | PTGES3 |
| UniProt ID | TEBP_HUMAN |

ADDITIONAL INFORMATION

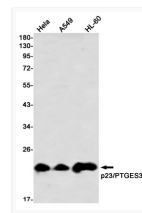
Note **STRICTLY FOR FURTHER SCIENTIFIC RESEARCH USE ONLY (RUO). MUST NOT TO BE USED IN DIAGNOSTIC OR THERAPEUTIC APPLICATIONS.**



p23 antibody immunocytochemistry HeLa cells
STJA0035307



p23/PTGES3 antibody western blot mouse rat
brain lung STJA0035307



p23/PTGES3 antibody western blot HeLa A549
HL-60 STJA0035307