

## Anti-CPS1 antibody [R01-2A0] (STJA0035162)

### GENERAL INFORMATION

|               |                    |
|---------------|--------------------|
| Product Type  | Primary antibodies |
| Applications  | WB/IHC-P/IP        |
| Host / Source | Rabbit             |
| Reactivity    | Human              |

### PRODUCT PROPERTIES

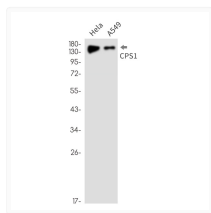
|                     |  |
|---------------------|--|
| Clonality           | Monoclonal   |
| Concentration       | 0.3 mg/mL  |
| Conjugation         | Unconjugated   |
| Purification        | Affinity Purified  |
| Dilution Range      | WB 1:500-1:1000<br>IHC 1:50-1:100<br>IP 1:20   |
| Formulation         | 50mM Tris-Glycine (pH 7.4) , 0.15M NaCl, 40% Glycerol, 0.01% Sodium azide and 0.05% BSA  |
| Isotype             | IgG  |
| Storage Instruction | Store at 4°C short term. Aliquot and store at -20°C long term. Avoid freeze/thaw cycles. |

### TARGET INFORMATION

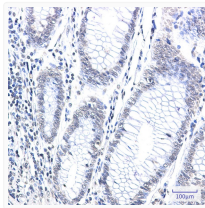
|             |                            |
|-------------|----------------------------|
| Gene ID     | <a href="#">1373</a>       |
| Gene Symbol | <a href="#">CPS1</a>       |
| UniProt ID  | <a href="#">CPSM_HUMAN</a> |

### ADDITIONAL INFORMATION

Note STRICTLY FOR FURTHER SCIENTIFIC RESEARCH USE ONLY (RUO). MUST NOT TO BE USED IN DIAGNOSTIC OR THERAPEUTIC APPLICATIONS.



CPS1 antibody western blot HeLa A549



CPS1 antibody immunohistochemistry human colon cancer STJA0035162