

## Anti-Phospho-Smad2-Ser250 antibody [R02-0D1] (STJA0035098)

### GENERAL INFORMATION

Product Type	Primary antibodies
Applications	WB
Host / Source	Rabbit
Reactivity	Human/Mouse/Rat/Hamster

### PRODUCT PROPERTIES

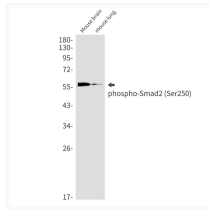
Clonality	Monoclonal
Concentration	0.3 mg/mL
Conjugation	Unconjugated
Purification	Affinity Purified
Dilution Range	WB 1:500-1:1000
Formulation	50mM Tris-Glycine (pH 7.4) , 0.15M NaCl, 40% Glycerol, 0.01% Sodium azide and 0.05% BSA
Isotype	IgG
Storage Instruction	Store at 4°C short term. Aliquot and store at -20°C long term. Avoid freeze/thaw cycles.

### TARGET INFORMATION

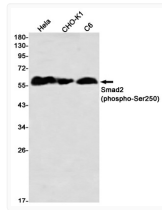
Gene ID	<a href="#">4087</a>
Gene Symbol	<a href="#">SMAD2</a>
UniProt ID	<a href="#">SMAD2_HUMAN</a>

### ADDITIONAL INFORMATION

Note STRICTLY FOR FURTHER SCIENTIFIC RESEARCH USE ONLY (RUO). MUST NOT TO BE USED IN DIAGNOSTIC OR THERAPEUTIC APPLICATIONS.



Phospho-Smad2 antibody western blot mouse brain lung STJA0035098



Smad2 Phospho-Ser250 antibody western blot HeLa CHO-K1 C6 STJA0035098