

Anti-Phospho-Filamin A/B-Ser2152/Ser2107 antibody [R02-7C0] (STJA0035067)

GENERAL INFORMATION

Product Type	Primary antibodies
Applications	WB/IHC-F/IHC-P/ICC/IF
Host / Source	Rabbit
Reactivity	Human/Rat

PRODUCT PROPERTIES

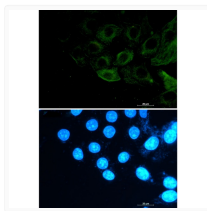
Clonality	Monoclonal
Concentration	0.3 mg/mL
Conjugation	Unconjugated
Purification	Affinity Purified
Dilution Range	WB 1:500-1:1000 IHC 1:50-1:100 IF 1:50-1:200
Formulation	50mM Tris-Glycine (pH 7.4) , 0.15M NaCl, 40% Glycerol, 0.01% Sodium azide and 0.05% BSA
Isotype	IgG
Storage Instruction	Store at 4°C short term. Aliquot and store at -20°C long term. Avoid freeze/thaw cycles.

TARGET INFORMATION

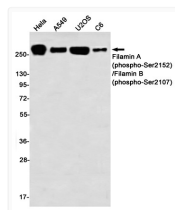
Gene ID	2317
Gene Symbol	FLNB
UniProt ID	FLNB_HUMAN

ADDITIONAL INFORMATION

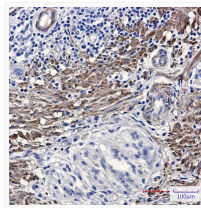
Note STRICTLY FOR FURTHER SCIENTIFIC RESEARCH USE ONLY (RUO). MUST NOT TO BE USED IN DIAGNOSTIC OR THERAPEUTIC APPLICATIONS.



Phospho-Filamin A/B antibody immunocytochemistry A549 cells STJA0035067



Filamin A Phospho-Ser2152 Filamin B Phospho-Ser2107 antibody western blot HeLa A549 U2OS C6 STJA0035067



Filamin A/B phospho antibody immunohistochemistry cholangiocarcinoma STJA0035067