

Anti-Phospho-E Cadherin-Ser838/Ser840 antibody [R03-3B3] (STJA0035060)

GENERAL INFORMATION

Product Type	Primary antibodies
Applications	WB/IHC-P/IP
Host / Source	Rabbit
Reactivity	Human/Mouse

PRODUCT PROPERTIES

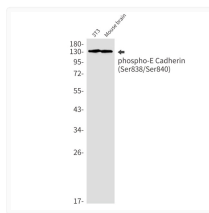
Clonality	Monoclonal
Concentration	0.3 mg/mL
Conjugation	Unconjugated
Purification	Affinity Purified
Dilution Range	WB 1:500-1:1000 IHC 1:50-1:100 IP 1:20
Formulation	50mM Tris-Glycine (pH 7.4) , 0.15M NaCl, 40% Glycerol, 0.01% Sodium azide and 0.05% BSA
Isotype	IgG
Storage Instruction	Store at 4°C short term. Aliquot and store at -20°C long term. Avoid freeze/thaw cycles.

TARGET INFORMATION

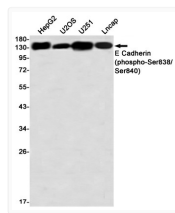
Gene ID	999
Gene Symbol	CDH1
UniProt ID	CADH1_HUMAN

ADDITIONAL INFORMATION

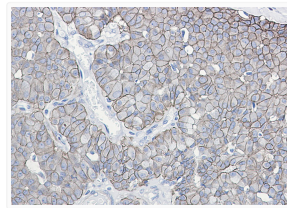
Note STRICTLY FOR FURTHER SCIENTIFIC RESEARCH USE ONLY (RUO). MUST NOT TO BE USED IN DIAGNOSTIC OR THERAPEUTIC APPLICATIONS.



Phospho-E Cadherin antibody western blot 3T3 mouse brain STJA0035060



E Cadherin Phospho-Ser838/Ser840 antibody western blot HepG2 U2OS U251 LNCaP



E Cadherin Phospho-Ser838/Ser840 antibody immunohistochemistry human breast cancer STJA0035060