

## Anti-SP1 antibody [R06-9I9] (STJA0034880)

### GENERAL INFORMATION

|               |                          |
|---------------|--------------------------|
| Product Type  | Primary antibodies       |
| Applications  | WB/IHC-F/IHC-P/ICC/IF/IP |
| Host / Source | Rabbit                   |
| Reactivity    | Human                    |

### PRODUCT PROPERTIES

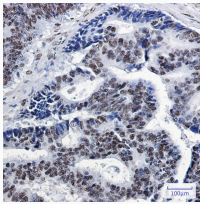
|                     |  |
|---------------------|--|
| Clonality           | Monoclonal   |
| Concentration       | 0.3 mg/mL  |
| Conjugation         | Unconjugated   |
| Purification        | Affinity Purified  |
| Dilution Range      | WB 1:500-1:1000<br>IHC 1:50-1:100<br>IF 1:50-1:200<br>IP 1:20                            |
| Formulation         | 50mM Tris-Glycine (pH 7.4) , 0.15M NaCl, 40% Glycerol, 0.01% Sodium azide and 0.05% BSA  |
| Isotype             | IgG  |
| Storage Instruction | Store at 4°C short term. Aliquot and store at -20°C long term. Avoid freeze/thaw cycles. |

### TARGET INFORMATION

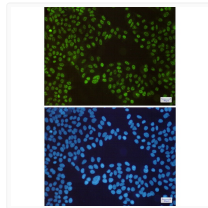
|             |                           |
|-------------|---------------------------|
| Gene ID     | <a href="#">6667</a>      |
| Gene Symbol | <a href="#">SP1</a>       |
| UniProt ID  | <a href="#">SP1_HUMAN</a> |

### ADDITIONAL INFORMATION

Note STRICTLY FOR FURTHER SCIENTIFIC RESEARCH USE ONLY (RUO). MUST NOT TO BE USED IN DIAGNOSTIC OR THERAPEUTIC APPLICATIONS.



SP1 antibody immunohistochemistry human colon cancer STJA0034880



SP1 antibody immunocytochemistry HeLa cells STJA0034880