

## Anti-Angiotensin Converting Enzyme 1 antibody [R01-9E3] (STJA0034019)

### GENERAL INFORMATION

|               |                    |
|---------------|--------------------|
| Product Type  | Primary antibodies |
| Applications  | WB/IHC-P           |
| Host / Source | Rabbit             |
| Reactivity    | Mouse/Rat          |

### PRODUCT PROPERTIES

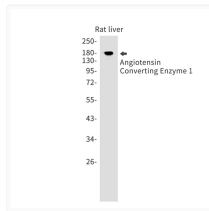
|                     |  |
|---------------------|--|
| Clonality           | Monoclonal   |
| Concentration       | 0.3 mg/mL  |
| Conjugation         | Unconjugated   |
| Purification        | Affinity Purified  |
| Dilution Range      | WB 1:500-1:1000<br>IHC 1:50-1:100  |
| Formulation         | 50mM Tris-Glycine (pH 7.4) , 0.15M NaCl, 40% Glycerol, 0.01% Sodium azide and 0.05% BSA  |
| Isotype             | IgG  |
| Storage Instruction | Store at 4°C short term. Aliquot and store at -20°C long term. Avoid freeze/thaw cycles. |

### TARGET INFORMATION

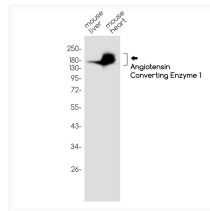
|             |                           |
|-------------|---------------------------|
| Gene ID     | <a href="#">11421</a>     |
| Gene Symbol | <a href="#">Ace</a>       |
| UniProt ID  | <a href="#">ACE_MOUSE</a> |

### ADDITIONAL INFORMATION

Note STRICTLY FOR FURTHER SCIENTIFIC RESEARCH USE ONLY (RUO). MUST NOT TO BE USED IN DIAGNOSTIC OR THERAPEUTIC APPLICATIONS.



Angiotensin Converting Enzyme 1 antibody western blot rat liver STJA0034019



Angiotensin Converting Enzyme 1 antibody western blot mouse liver heart STJA0034019