

Anti-Cofilin 1 antibody [R03-5J-1] (STJA0033760)

GENERAL INFORMATION

Product Type	Primary antibodies
Applications	WB
Host / Source	Rabbit
Reactivity	Human/Mouse/Rat

PRODUCT PROPERTIES

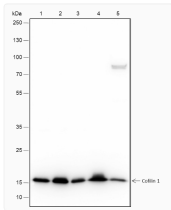
Clonality	Monoclonal
Conjugation	Unconjugated
Purification	Protein A
Dilution Range	WB 1:500-1:2000
Formulation	Liquid in PBS, Glycerol and BSA
Isotype	IgG
Storage Instruction	Store at -20°C. Avoid freeze/thaw cycles.

TARGET INFORMATION

Gene ID	1072
Gene Symbol	CFL1
UniProt ID	COF1_HUMAN

ADDITIONAL INFORMATION

Note **STRICTLY FOR FURTHER SCIENTIFIC RESEARCH USE ONLY (RUO). MUST NOT TO BE USED IN DIAGNOSTIC OR THERAPEUTIC APPLICATIONS.**



Cofilin 1 antibody western blot HeLa MCF-7 293T
 C6 NIH/3T3 STJA0033760