

Anti-SMARCD1 antibody [R07-5D-8] (STJA0033752)

GENERAL INFORMATION

Product Type	Primary antibodies
Applications	WB
Host / Source	Rabbit
Reactivity	Human/Mouse

PRODUCT PROPERTIES

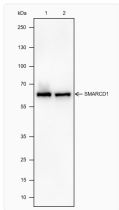
Clonality	Monoclonal
Conjugation	Unconjugated
Purification	Protein A
Dilution Range	WB 1:500-1:1000
Formulation	Liquid in PBS, Glycerol and BSA
Isotype	IgGk
Storage Instruction	Store at -20°C. Avoid freeze/thaw cycles.

TARGET INFORMATION

Gene ID	6602
Gene Symbol	SMARCD1
UniProt ID	SMRD1_HUMAN

ADDITIONAL INFORMATION

Note STRICTLY FOR FURTHER SCIENTIFIC RESEARCH USE ONLY (RUO). MUST NOT TO BE USED IN DIAGNOSTIC OR THERAPEUTIC APPLICATIONS.



SMARCD1 antibody western blot Neuro-2a Jurkat
 STJA0033752