

Anti-Amy2 antibody [R06-1T-1] (STJA0033728)

GENERAL INFORMATION

Product Type	Primary antibodies
Applications	WB
Host / Source	Rabbit
Reactivity	Mouse/Rat

PRODUCT PROPERTIES

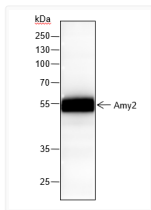
Clonality	Monoclonal
Conjugation	Unconjugated
Purification	Protein A
Dilution Range	WB 1:500-1:2000
Formulation	Liquid in PBS, Glycerol and BSA
Isotype	IgG
Storage Instruction	Store at -20°C. Avoid freeze/thaw cycles.

TARGET INFORMATION

Gene ID	100043684/100043686/100043688/109959
Gene Symbol	Amy2a5
UniProt ID	AM2A5_MOUSE

ADDITIONAL INFORMATION

Note STRICTLY FOR FURTHER SCIENTIFIC RESEARCH USE ONLY (RUO). MUST NOT TO BE USED IN DIAGNOSTIC OR THERAPEUTIC APPLICATIONS.



Amy2 antibody western blot mouse pancreas
STJA0033728