

Anti-ERCC1 antibody [R07-6S-1] (STJA0033722)

GENERAL INFORMATION

Product Type	Primary antibodies
Applications	IHC-P
Host / Source	Rabbit
Reactivity	Human/Mouse/Rat

PRODUCT PROPERTIES

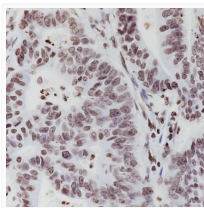
Clonality	Monoclonal
Conjugation	Unconjugated
Purification	Protein A
Dilution Range	IHC-P 1:200-1:1000
Formulation	Liquid in PBS, Glycerol and BSA
Isotype	IgG
Storage Instruction	Store at -20°C. Avoid freeze/thaw cycles.

TARGET INFORMATION

Gene ID	2067
Gene Symbol	ERCC1
UniProt ID	ERCC1_HUMAN

ADDITIONAL INFORMATION

Note STRICTLY FOR FURTHER SCIENTIFIC RESEARCH USE ONLY (RUO). MUST NOT TO BE USED IN DIAGNOSTIC OR THERAPEUTIC APPLICATIONS.



ERCC1 antibody immunohistochemistry mouse colon STJA0033722