

Anti-MCM2 antibody [R08-4A-5] (STJA0033705)

GENERAL INFORMATION

Product Type	Primary antibodies
Applications	IHC-P
Host / Source	Rabbit
Reactivity	Human/Mouse/Rat

PRODUCT PROPERTIES

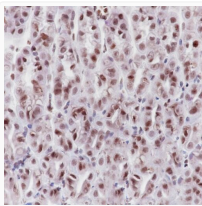
Clonality	Monoclonal
Conjugation	Unconjugated
Purification	Protein A
Dilution Range	IHC-P 1:200-1:1000
Formulation	Liquid in PBS, Glycerol and BSA
Isotype	IgG
Storage Instruction	Store at -20°C. Avoid freeze/thaw cycles.

TARGET INFORMATION

Gene ID	4171
Gene Symbol	MCM2
UniProt ID	MCM2_HUMAN

ADDITIONAL INFORMATION

Note STRICTLY FOR FURTHER SCIENTIFIC RESEARCH USE ONLY (RUO). MUST NOT TO BE USED IN DIAGNOSTIC OR THERAPEUTIC APPLICATIONS.



MCM2 antibody immunohistochemistry mouse stomach STJA0033705