

Anti-NFE2L2-L30F Mutant antibody (STJA0033640)

GENERAL INFORMATION

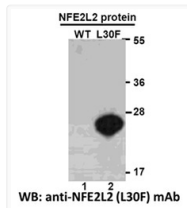
Product Type	Primary antibodies
Applications	WB/ICC/IF/ELISA
Host / Source	Mouse
Reactivity	Vertebrates

PRODUCT PROPERTIES

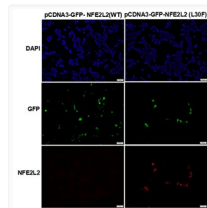
Clonality	Monoclonal
Conjugation	Unconjugated
Purification	Purified from ascites
Dilution Range	WB-1:500-1:1000 IHC-P-1:50-1:100 ELISA-1:1000-1:2000 IF-1:50-1:200
Formulation	Liquid in PBS (without Mg ²⁺ and Ca ²⁺) , pH 7.4, 150 mM NaCl, 50% glycerol
Isotype	IgG
Storage Instruction	Store at -20°C. Avoid freeze/thaw cycles.

ADDITIONAL INFORMATION

Note **STRICTLY FOR FURTHER SCIENTIFIC RESEARCH USE ONLY (RUO). MUST NOT TO BE USED IN DIAGNOSTIC OR THERAPEUTIC APPLICATIONS.**



NFE2L2L30F antibody western blot recombinant protein STJA0033640



NFE2L2 antibody immunofluorescence HEK293T cells STJA0033640