

Anti-KIT-K642E Mutant antibody (STJA0033629)

GENERAL INFORMATION

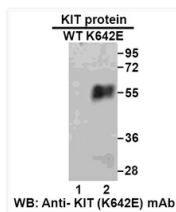
Product Type	Primary antibodies
Applications	WB/ELISA
Host / Source	Mouse
Reactivity	Vertebrates

PRODUCT PROPERTIES

Clonality	Monoclonal
Conjugation	Unconjugated
Purification	Purified from ascites
Dilution Range	WB-1:500-1:1000 ELISA-1:1000-1:5000
Formulation	Liquid in PBS (without Mg ²⁺ and Ca ²⁺) , pH 7.4, 150 mM NaCl, 50% glycerol
Isotype	IgG
Storage Instruction	Store at -20°C. Avoid freeze/thaw cycles.

ADDITIONAL INFORMATION

Note STRICTLY FOR FURTHER SCIENTIFIC RESEARCH USE ONLY (RUO). MUST NOT TO BE USED IN DIAGNOSTIC OR THERAPEUTIC APPLICATIONS.



KITK642E antibody western blot recombinant protein STJA0033629