

## Anti-Estrogen Inducible Protein pS2 antibody [6G1-7C8-9B6] (STJA0033532)

### GENERAL INFORMATION

Product Type	Primary antibodies
Applications	IHC-P
Host / Source	Mouse
Reactivity	Human

### PRODUCT PROPERTIES

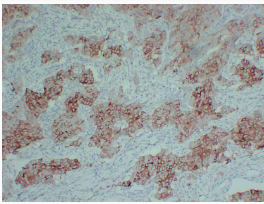
Clonality	Monoclonal
Concentration	1 mg/mL
Conjugation	Unconjugated
Purification	Affinity Chromatography
Dilution Range	IHC 1:100-1:500
Formulation	Liquid in PBS containing 50% glycerol, 0.5% BSA and 0.02% sodium azide, pH 7.3.
Isotype	IgG2a
Storage Instruction	Store at 4°C short term. Aliquot and store at -20°C long term. Avoid freeze/thaw cycles.

### TARGET INFORMATION

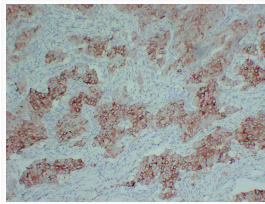
Gene ID	<a href="#">7031</a>
Gene Symbol	<a href="#">TFF1</a>
UniProt ID	<a href="#">TFF1_HUMAN</a>

### ADDITIONAL INFORMATION

Note **STRICTLY FOR FURTHER SCIENTIFIC RESEARCH USE ONLY (RUO). MUST NOT TO BE USED IN DIAGNOSTIC OR THERAPEUTIC APPLICATIONS.**



Estrogen Inducible Protein pS2 antibody immunohistochemistry human breast carcinoma STJA0033532



Estrogen Inducible Protein pS2 antibody immunohistochemistry human breast carcinoma STJA0033532