

Anti-Cadherin 16 antibody [2C2-8E4-10G1] (STJA0033527)

GENERAL INFORMATION

Product Type	Primary antibodies
Applications	IHC-P
Host / Source	Mouse
Reactivity	Human

PRODUCT PROPERTIES

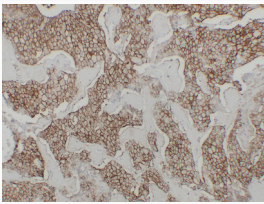
Clonality	Monoclonal
Concentration	1 mg/mL
Conjugation	Unconjugated
Purification	Affinity Chromatography
Dilution Range	IHC 1:100-1:500
Formulation	Liquid in PBS containing 50% glycerol, 0.5% BSA and 0.02% sodium azide, pH 7.3.
Isotype	IgG2a
Storage Instruction	Store at 4°C short term. Aliquot and store at -20°C long term. Avoid freeze/thaw cycles.

TARGET INFORMATION

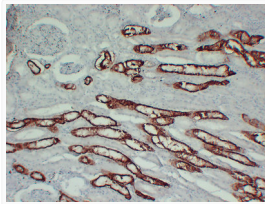
Gene ID	1014
Gene Symbol	CDH16
UniProt ID	CAD16_HUMAN

ADDITIONAL INFORMATION

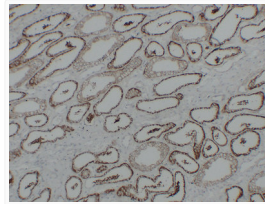
Note STRICTLY FOR FURTHER SCIENTIFIC RESEARCH USE ONLY (RUO). MUST NOT TO BE USED IN DIAGNOSTIC OR THERAPEUTIC APPLICATIONS.



Cadherin 16 antibody immunohistochemistry Chromophobe renal carcinoma STJA0033527



Cadherin 16 antibody immunohistochemistry kidney paraffin-embedded STJA0033527



Cadherin 16 antibody immunohistochemistry renal clear cell carcinoma STJA0033527