

## Anti-Prolactin antibody [4G9-6C10-2F5] (STJA0033487)

### GENERAL INFORMATION

Product Type	Primary antibodies
Applications	IHC-P
Host / Source	Mouse
Reactivity	Human

### PRODUCT PROPERTIES

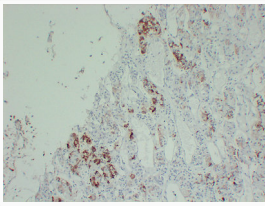
Clonality	Monoclonal
Concentration	1 mg/mL
Conjugation	Unconjugated
Purification	Affinity Chromatography
Dilution Range	IHC 1:100-1:500
Formulation	Liquid in PBS containing 50% glycerol, 0.5% BSA and 0.02% sodium azide, pH 7.3.
Isotype	IgG3
Storage Instruction	Store at 4°C short term. Aliquot and store at -20°C long term. Avoid freeze/thaw cycles.

### TARGET INFORMATION

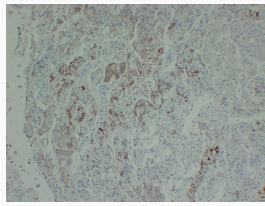
Gene ID	<a href="#">5617</a>
Gene Symbol	<a href="#">PRL</a>
UniProt ID	<a href="#">PRL_HUMAN</a>

### ADDITIONAL INFORMATION

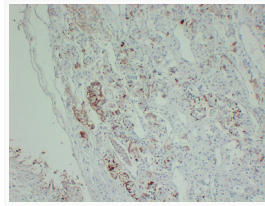
Note **STRICTLY FOR FURTHER SCIENTIFIC RESEARCH USE ONLY (RUO). MUST NOT TO BE USED IN DIAGNOSTIC OR THERAPEUTIC APPLICATIONS.**



Prolactin antibody immunohistochemistry hyperprolactinemia tissue STJA0033487



Prolactin antibody immunohistochemistry hyperprolactinemia paraffin tissue STJA0033487



Prolactin antibody immunohistochemistry hyperprolactinemia tissue paraffin STJA0033487