

## Anti-Neurofilament Light Polypeptide antibody [2D7-6C10-10B2] (STJA0033472)

### GENERAL INFORMATION

Product Type	Primary antibodies
Applications	IHC-P
Host / Source	Mouse
Reactivity	Human

### PRODUCT PROPERTIES

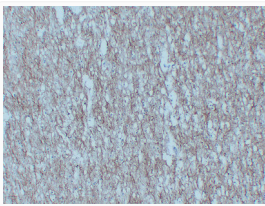
Clonality	Monoclonal
Concentration	1 mg/mL
Conjugation	Unconjugated
Purification	Affinity Chromatography
Dilution Range	IHC 1:100-1:500
Formulation	Liquid in PBS containing 50% glycerol, 0.5% BSA and 0.02% sodium azide, pH 7.3.
Isotype	IgG2b
Storage Instruction	Store at 4°C short term. Aliquot and store at -20°C long term. Avoid freeze/thaw cycles.

### TARGET INFORMATION

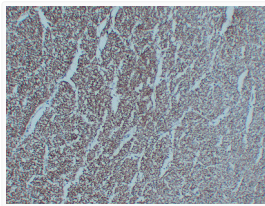
Gene ID	<a href="#">4747</a>
Gene Symbol	<a href="#">NEFL</a>
UniProt ID	<a href="#">NFL_HUMAN</a>

### ADDITIONAL INFORMATION

Note STRICTLY FOR FURTHER SCIENTIFIC RESEARCH USE ONLY (RUO). MUST NOT TO BE USED IN DIAGNOSTIC OR THERAPEUTIC APPLICATIONS.



Neurofilament Light Polypeptide antibody immunohistochemistry brain tissue STJA0033472



Neurofilament Light Polypeptide antibody immunohistochemistry hippocampus STJA0033472