

Anti-Glucagon antibody [5B6-8B6-3A3] (STJA0033443)

GENERAL INFORMATION

Product Type	Primary antibodies
Applications	IHC-P
Host / Source	Mouse
Reactivity	Human

PRODUCT PROPERTIES

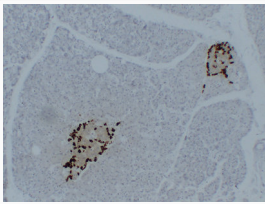
Clonality	Monoclonal
Concentration	1 mg/mL
Conjugation	Unconjugated
Purification	Affinity Chromatography
Dilution Range	IHC 1:100-1:500
Formulation	Liquid in PBS containing 50% glycerol, 0.5% BSA and 0.02% sodium azide, pH 7.3.
Isotype	IgG2b
Storage Instruction	Store at 4°C short term. Aliquot and store at -20°C long term. Avoid freeze/thaw cycles.

TARGET INFORMATION

Gene ID	2641
Gene Symbol	GCG
UniProt ID	GLUC_HUMAN

ADDITIONAL INFORMATION

Note STRICTLY FOR FURTHER SCIENTIFIC RESEARCH USE ONLY (RUO). MUST NOT TO BE USED IN DIAGNOSTIC OR THERAPEUTIC APPLICATIONS.



Glucagon antibody immunohistochemistry
pancreatic carcinoma STJA0033443